

Smith Equipment USA

presents



Equipment Mobility: Setting Up the Ideal Lowboy

The Evolution of the Mining Lowboy



Nice to Have



Maintenance Support Machine



Priority One Production Machine



The Evolution of the Mining Lowboy

- Lowboy equipment now becoming part of pre-feasibility studies for greenfield mines
- Integral part of fleet matrix decisions
- Mining OEM's integrating features on their equipment to suit lowboy/towing operations



Setting Up Your Ideal Lowboy

So, the big question: what would you like to move?



Setting Up Your Ideal Lowboy

What do you want to move?

- One size does not necessarily fit all
 - Above 450 tons, mining lowboys become more “specialized”
- Focus on what moves most often
 - Majority of ***TowHaul*** customers basing justification on drills and dozers

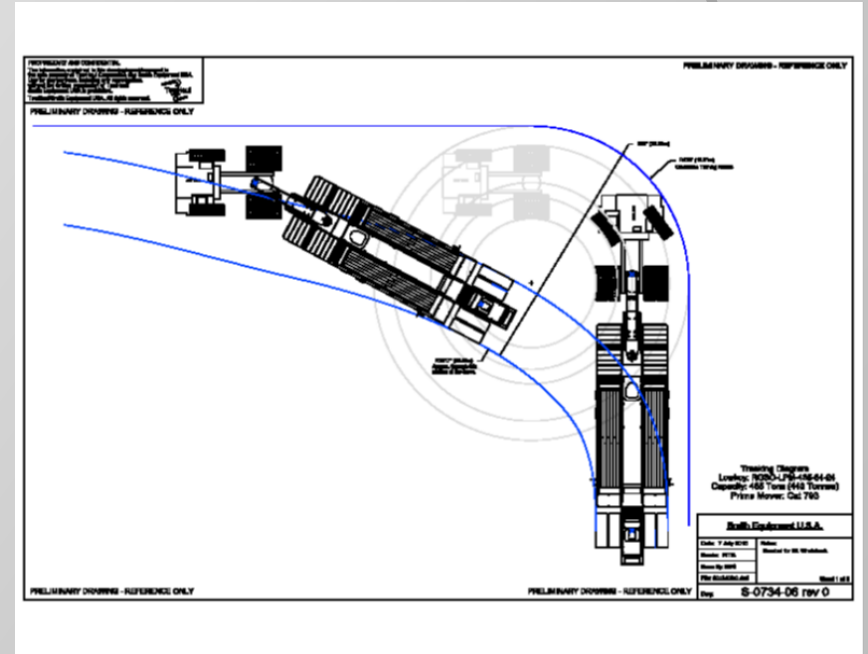
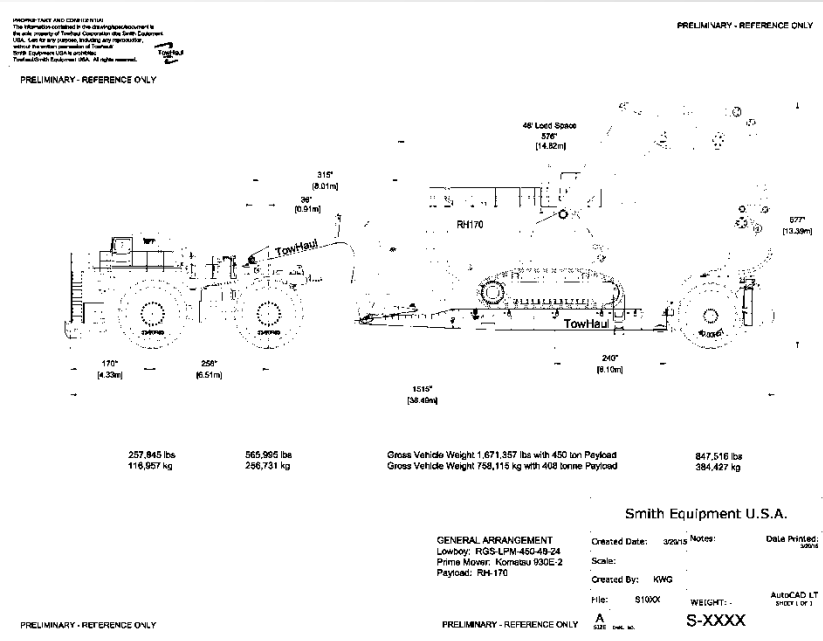


Setting Up Your Ideal Lowboy Prime Mover Selection

- Primary Drivers
 - Payload of lowboy
 - Disabled haul truck towing
- New vs Used Truck



Setting Up Your Ideal Lowboy Mine Site Infrastructure



- Haul Road Design
- Driving Rules
- Bridges and Underpasses
- Power Lines

Setting Up Your Ideal Lowboy Long-Term Success

- Equipment “Ownership”
- Training, Training, Training
- PM Schedules
- Inspection Protocols

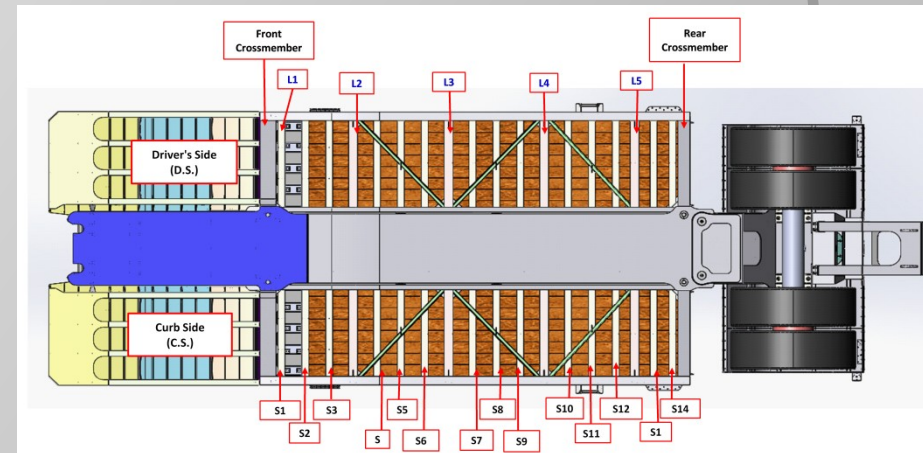
TowHaul by SMITH Decrease Your Costs
Increase Your Mobility[®]

Appendix B - Preventative Maintenance Inspection Guide

TowHaul Inspection Guide



Item	Component	Inspection Activity
1	Counterweight	Inspect mounts for structural damage or cracking; repair as necessary
2	In-Cab Controls	Inspect condition of connection and verify system is functioning properly Verify condition and functionality of wireless remote, if equipped
3	Walkways	Inspect structural components for damage or cracking; repair as necessary Re-torque any loose bolts
4	Valve/Valve Mount	Inspect valve mount for structural damage or cracking; repair as necessary Inspect valve for leaks and general condition; repair as necessary
5	Hose Reel Cabinets	Inspect mounting brackets for structural damage; repair as necessary Inspect condition of hoses/wheels; repair or replace as necessary
6	High Pressure Filter/Accumulator	Inspect mounts for structural damage or cracking; repair as necessary





THANK YOU
www.towhaul.com

