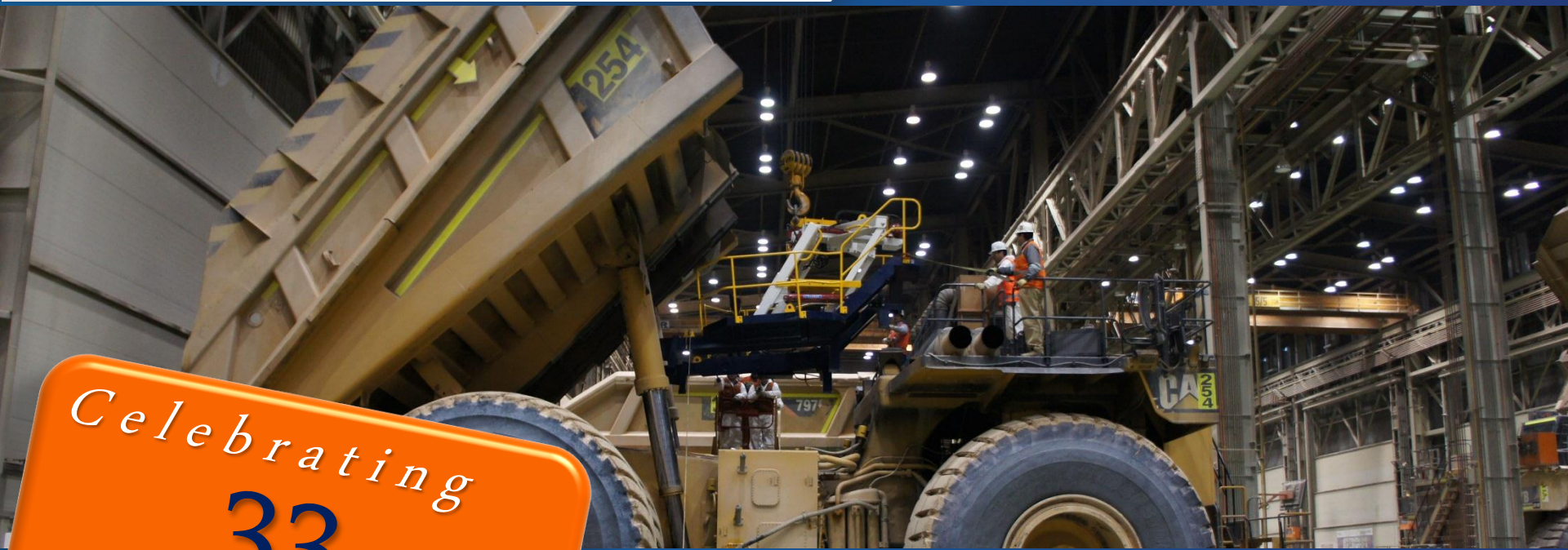


# 797 Transmission Hoist- Innovative Tooling



*Celebrating*  
**33** years  
1980 to 2013

At Hedweld we understand the importance of **safety** and **efficiency** within the mining and earthmoving industries. That is why we design and manufacture **innovative** and world leading products:

**Trilift**<sup>®</sup> component handling equipment

**Safe-Away**<sup>®</sup> ladder and stairway access systems

Hedweld is based in the Hunter Valley, NSW Australia.

# About Hedweld

Hedweld began in 1980

Strong supporters of the local community, the mining industry and our staff

Owners Ian and Jan Hedley running a successful family business



# Hedweld today

75 full time staff  
25 trainees/apprentices

Consisting of:  
**Hedweld Engineering,**  
**Mecensol, and**  
**Hedweld USA**



Currently exporting to 24 countries

# Hedweld Facilities

Head office Mount Thorley, NSW Australia

Administration and workshop

Stores and Safe-Away workshop



Mackay, QLD



New warehouse in Idaho, USA



# Only the best in automated machinery



Motoman NX100 and Almega AX- V16 welding robots



Kinetic K4000 NXC profile cutter



10T overhead crane with Technomagnet plate lifter



Durma E37200 brake press



Durma Es3006 guillotine



Okuma MU400VA - 5 axis universal milling center, Okuma ACE Center MB66VA machining center and Okuma Space Turn LB300-M CNC lathe



Dieci Hercules 120.10 mobile crane and forklift

# Hedweld's Global Network

Current export markets for Trilift® and Safe-Away® products:

1. United Kingdom
2. Canada
3. Chile
4. China
5. Colombia
6. India
7. Indonesia
8. New Zealand
9. Papua New Guinea
10. Peru
11. South Africa
12. USA
13. Kazakhstan
14. Kyrgyzstan
15. Mexico
16. New Caledonia
17. Mozambique
18. Mongolia
19. Brazil
20. Belgium
21. France
22. Mauritania
23. Botswana
24. Egypt



- Hedweld's offices
- Export markets
- Hedweld's Agents

# SAFE-AWAY<sup>®</sup>

Ladder and Stairway Access Systems

## Why you need Safe-Away:

By replacing traditional boarding methods personnel can access equipment easily, safely and quickly. Hedweld have created over 20 styles of ladders (62 degree angle) and stairways (45 degree angle) to suit most makes and models of mining and earthmoving equipment.



***For a safer way to access earthmoving and mining equipment***



# SAFE-AWAY®

Ladder and Stairway Access Systems

## Features & Benefits:

- Increase safety
- Reduce down time
- Innovative designs
- Efficient operation
- Technologically advanced
- Data logging and diagnostics



***For a safer way to access earthmoving and mining equipment***

# **Trilift**®

## Why you need Trilift products

As the size of mining equipment grows, traditional methods for handling components has become more hazardous. It is not just the size and weight that are of concern, these components also require additional reach to access them.

**Hedweld's specialized products offer improved safety and efficiency for maintenance personnel.**

*For the safe and time efficient handling of mining equipment components*



# **Trilift**

## Benefits of Trilift products

- Increase safety
- Work within one bay
- Reduce down time
- Innovative product designs
- Efficient operation
- Technologically advanced

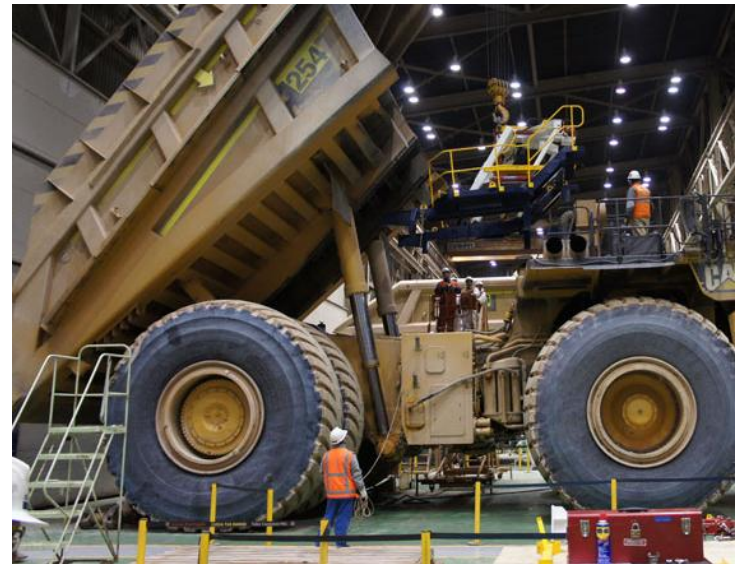


*For the safe and time efficient handling of mining equipment components*

## Innovative Tooling- Cat 797 Transmission Hoist

**Trilift**<sup>®</sup>

**Transmission Hoist** for removing and replacing transmissions on Cat 797 haul trucks without the need to remove the dump body.



*For the safe and time efficient handling of mining equipment components*

# Traditional Method



Labor intensive

Real estate intensive

Personnel at risk

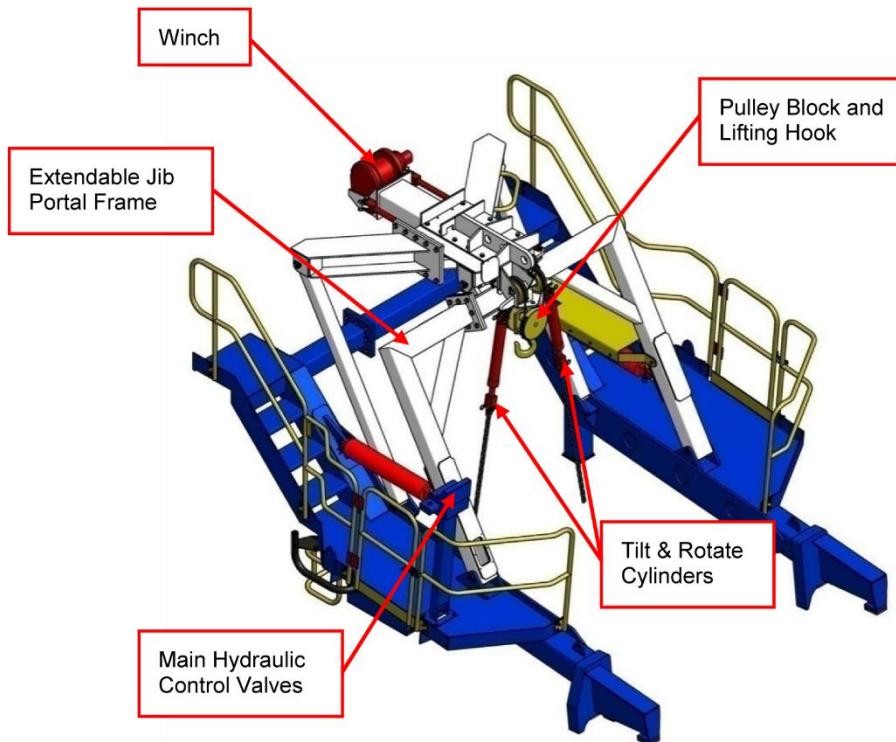
Additional costs

# Traditional Method



**LIFT**  
**RI** **Trilift**

# Cat 797 Transmission hoist



- The **Trilift® CAT 797 Transmission Hoist** offers a safer alternative to the traditional methods of removal and installation of the Transmission in the CAT 797.
- Consisting of a main frame carrier which is positioned on the chassis rails using the workshop overhead crane, the **Trilift® CAT 797 Transmission Hoist** provides a safer environment for maintenance staff involved with transmission removal and installation.

# Cat 797 Transmission hoist



Choice of Diesel / Pneumatic

8,000KG Safe Working Load

Mounts on truck chassis

Hydraulic operation with safety valves

Full walkway with handrails



# Case study: Escondida Chile



One of the world's largest fleets of 797's

Extreme climate & high altitude

Difficult location

Large work force

# Case study: Escondida Chile



Additional space required

Mobile crane required

Personnel at risk

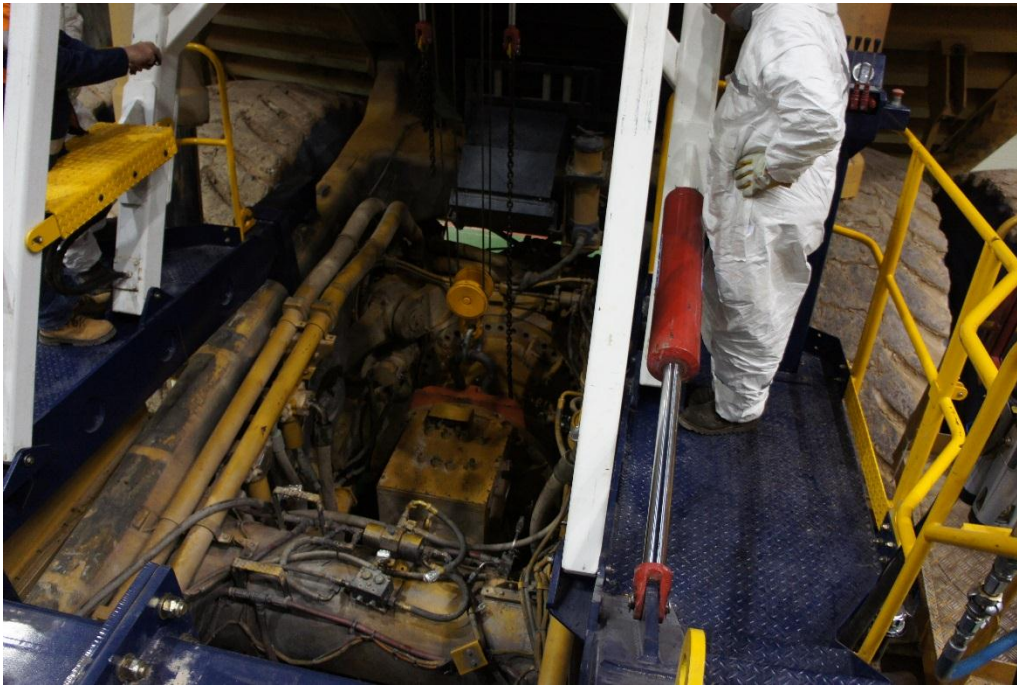
Additional personnel required

## Case study: Escondida Chile



- Utilizing the **Trilift® CAT 797 Transmission Hoist** the transmission can be removed within the workshop without removing the dump body.
- Initial removal process after transmission is prepared takes approx. 40 mins.
- Significant improvement in turn around time.

# Case study: Escondida Chile



Personnel required reduced

Works within one bay

Personnel removed from line-of-fire

Walkways with handrails

## Case study: Escondida Chile

### Conclusion



Improved safety

Works within one bay

Reduced downtime

Improved efficiency

## Case study: Syncrude Canada



large fleet of 797's

Extreme climate

Remote location

# Case study: Syncrude Canada



Additional space required

Mobile crane required

Personnel at risk

Additional personnel required

## Case study: Syncrude Canada



- Utilizing the **Trilift® CAT 797 Transmission Hoist** the transmission can be removed within the workshop without removing the dump body.
- Currently removing and replacing transmission in under an hour.
- Significant improvement in turn around time.



# Case study: Syncrude Canada



- Personnel required reduced
- Works within one bay
- Personnel removed from line-of-fire
- Walkways with handrails

# Case study: Syncrude Canada

## Conclusion



Improved safety

Works within one bay

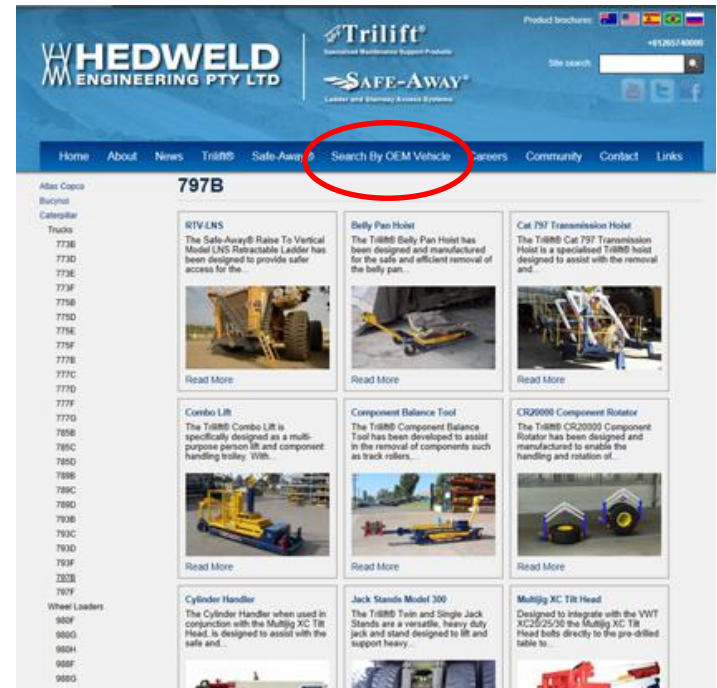
Reduced downtime

Improved efficiency



Ladder and Stairway Access Systems

Visit [www.hedweld.com.au](http://www.hedweld.com.au) and use the “Search by OEM Vehicle” tab to discover which innovative Hedweld products will improve the safety and efficiency for your fleet.



# Our hope for the future

**That the Mine Maintenance workshops of the future have:**

- All of the work bays being efficiently utilized
- Machines performing different tasks within small footprints
- All components being handled safely
- All the machines purpose-built to carry the heavy loads
- All component handling equipment designed for universal use, to gain cost efficiencies

***With the ultimate outcome of minimizing workplace injuries and maximizing truck availability.***

# Delivering the workshop of the future



13 Russell Rd, Mt Thorley  
NSW 2330 AUSTRALIA  
+61 2 6574 0000

[www.hedweld.com.au](http://www.hedweld.com.au)